

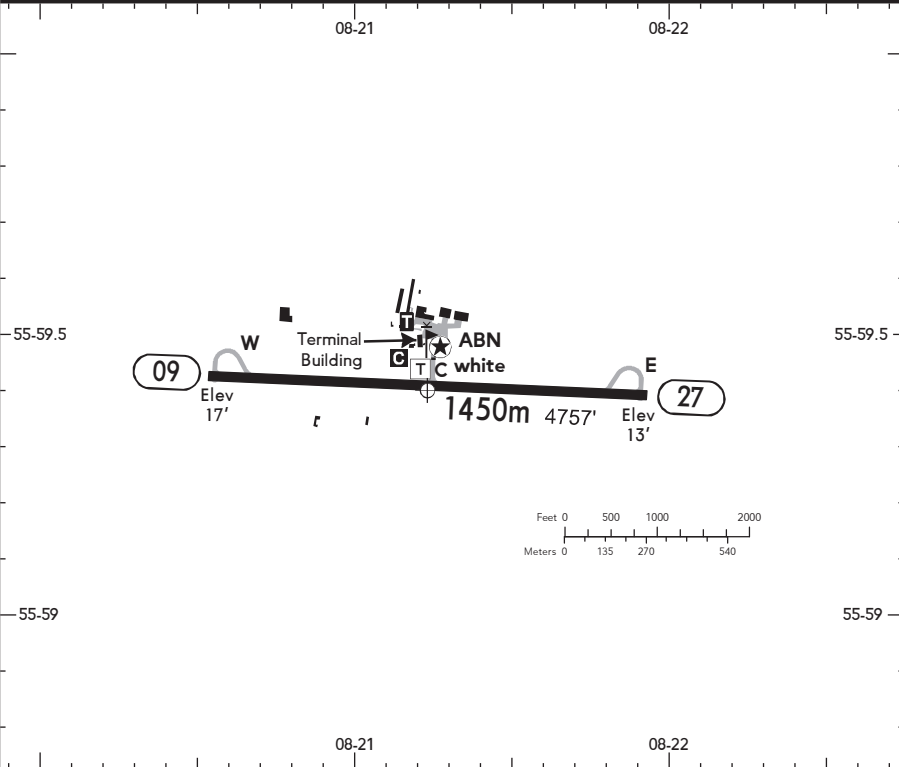
BRIEFING STRIP™

LOCATION
Elev 17' /5m
N55 59.4 E008 21.2


AFIS
STAUNING AFIS 121.400 (da, en)

ADMITTED AIRCRAFT


SCALE 1:25000



ALS - PAPI - THRL - RL - TWYL ("C") - WDI - OBSTL.

RWY No	Dimension (m) - Surface	TORA (m)	LDA (m)	Strength	Lights
09 (091°) 27 (271°) ①	1450 x 30 Asphalt	1199	1199	PCN 21/F/A/Y/T	

① last 251m each side of RWY are used as SWY.

CAUTION: Wind farms in vicinity of AD.
Parachuting may take place.
 PCL available outside service hours. Obtain details from AD.
 Overflying the summerhouse area W of the AD should be avoided in connection with TKOF and LDG.
 Overflying the towns within TIZ should be avoided.
 TWYs W & E usable at daytime only.