

BORKUM
BORKUM
GERMANY

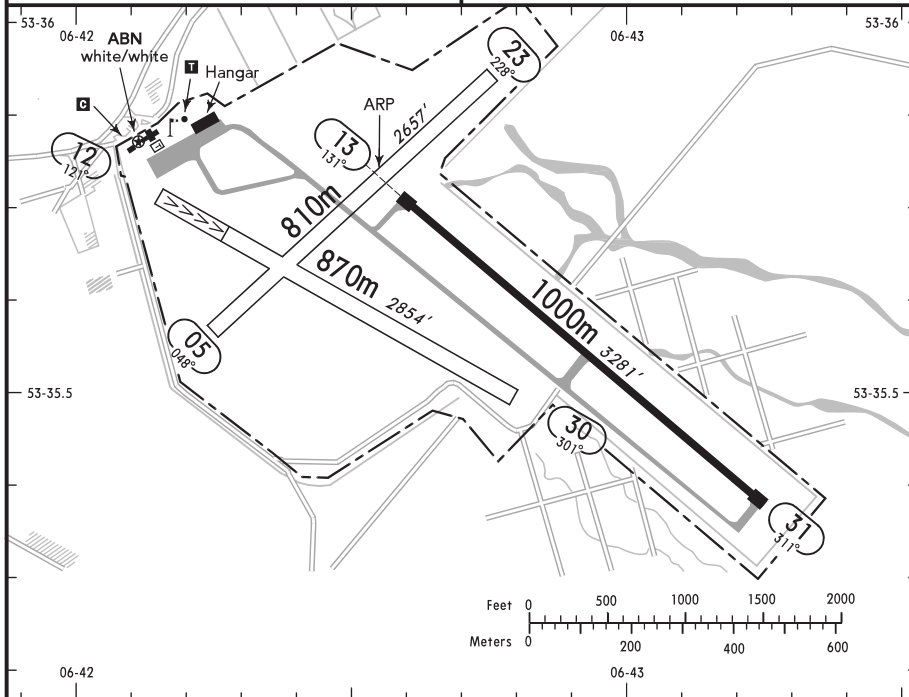
19-2 4 MAR 05



(Triple-axled, PPR)

(FIS)

BREMEN INFORMATION 125.10



ABN - RWY 13/31: THRL - RWYL - TWYL - APRON.

RWY No	Dimension (m) - Surface	TORA (m)	LDA (m)	Strength	Lights
13 31	1000 x 20 Asphalt	1000	1000	5.7t MPW ②	☉
12 30	870 x 40 Grass	870 ③ 700	700 870	2t MPW	—
05 23	810 x 40 Grass	810	810	5.7t MPW	—

② HEL 10t MPW.

③ TKOF up to 5.7t MPW / TKOF bis 5.7t MPW.

The western part of the island including the built-up areas of the city as well as beaches shall not be overflown below 2000'.

Der westliche Teil der Insel einschließlich des Stadtgebietes sowie der vorgelagerten Strände darf nicht unter 2000' überfliegen werden.