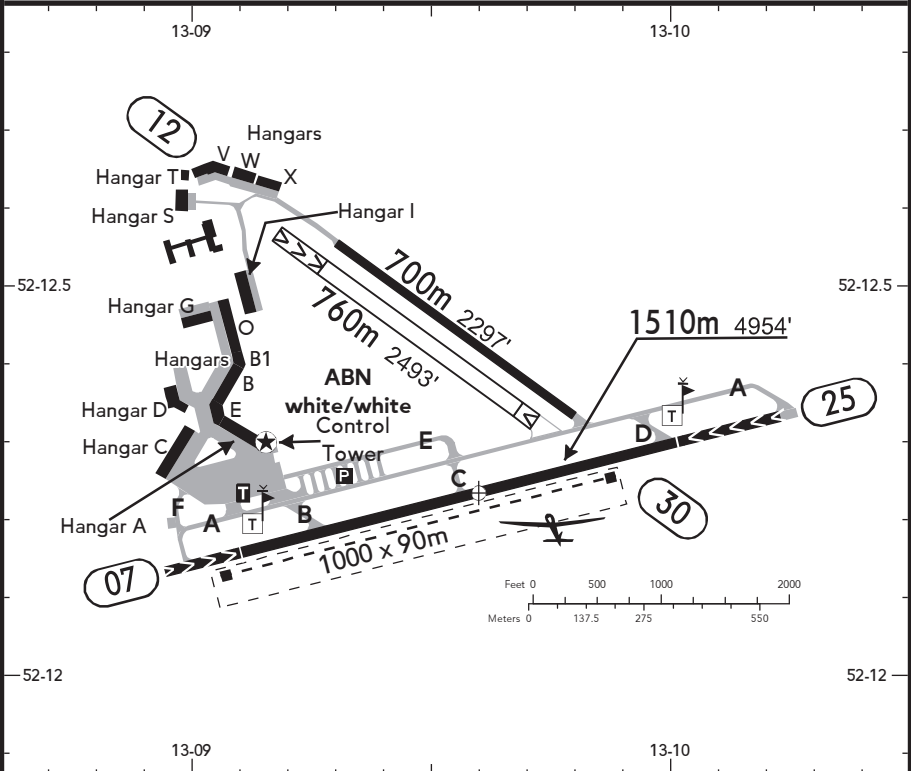


BRIEFING STRIP™

|   |   |
|---|---|
| LOCATION<br>Elev <b>135'</b> /41m<br>N52 12.2 E013 09.6 | AFIS<br>SCHÖNHAGEN INFO <b>131.150</b> <sup>(1)</sup> <sup>(2)</sup> (ge, en) |
|---|---|

|  |
|--|
| ADMITTED AIRCRAFT<br> |
|--|

<sup>(1)</sup> VDF <sup>(2)</sup> 25 NM / 4000' AGL



SCALE: 1:18000

☞ ABN - RWY 07/25: ALS - PAPI (3.5°) - RL - TWYL - APRON - WDI.

| RWY No                   | Dimension (m) - Surface | TORA (m)     | LDA (m)      | Strength       | Lights |
|--------------------------|-------------------------|--------------|--------------|----------------|--------|
| 07 (070°)<br>25 (250°) ☞ | 1510 x 23 Asphalt       | 1270<br>1340 | 1340<br>1270 | PCN 25/F/A/X/T | ☞      |
| 12 (116°)<br>30 (296°)   | 760 x 40 Grass          | 710<br>625   | 625<br>710   | 2t MPW         | ---    |
| 12 (116°)<br>30 (296°)   | 700 x 18 Asphalt        | 700          | 700          | PCN 25/F/A/X/T | ---    |

☛ The paved safety strip (40m) may be used additionally for TKOF if necessary.

**NOTE:** Refer to Berlin (EDDB) Area Information.  
Contact SCHÖNHAGEN INFO at least 5 MIN prior to reaching the AD.  
Within AD traffic listening watch shall be maintained.  
Straight-in direct APCH & DEP are generally prohibited.  
Fast ACFT may use the offset base for visual APCH 07.  
Visual approach traffic circuit 07/25 only via downwind.

Approach via right base 25 only on instruction from INFO.  
DEPs from RWY 07/25 only with crosswind. No heading change below 1500' as far as possible in VMC.  
Approaching ULM use pattern for motor ACFT in 1000'.  
Small ULM-pattern in 700' only for pattern TFC.  
TKOF into direction RWY 12, LDG in direction RWY 12/30 on instruction from INFO only. TKOF into direction RWY 30 are prohibited for all ACFT.