

EDFO

JEPPESSEN

MICHELSTADT/ODW.

MICHELSTADT/ODW.

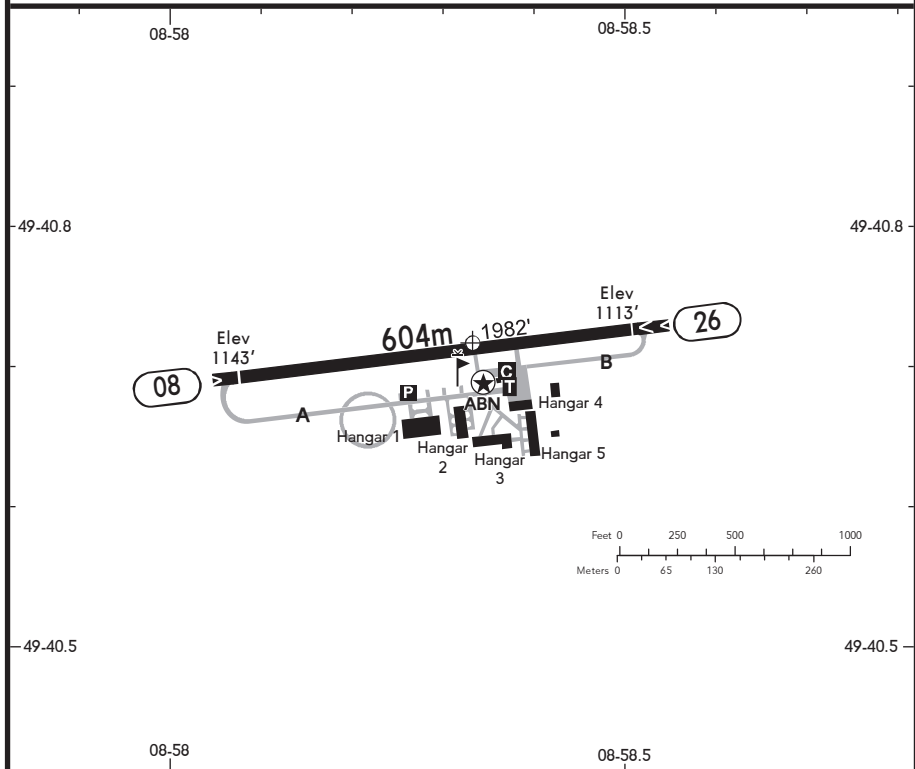
06 APR 18 (19-2)

GERMANY

BRIEFING STRIP™

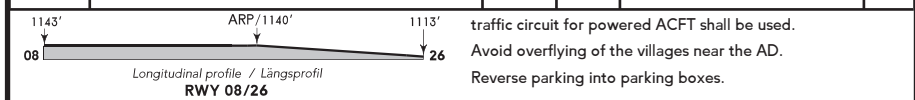
LOCATION Elev 1143' /348m N49 40.7 E008 58.3	AFIS MICHELSTADT INFO 124.515 ⁽¹⁾ (ge, en)	ADMITTED AIRCRAFT (Cable)
--	--	----------------------------------

⁽¹⁾ 15 NM / 3000' AGL



ABN - APAPI 08 (4.5°), 26 (3.75°) - THRL - RL - WDI - OBSTL.

RWY No	Dimension (m) - Surface	TORA (m)	LDA (m)	Strength	Lights
08 (081°)	604 x 15 Asphalt	570	540	2.5t MPW	
26 (261°)		574			



traffic circuit for powered ACFT shall be used.
 Avoid overflying of the villages near the AD.
 Reverse parking into parking boxes.

Contact MICHELSTADT INFO at least 5 MIN prior to reaching the AD.
 Within AD traffic listening watch shall be maintained.
 TKOF/LDG of student pilots only with an instructor.
 TKOF/LDG connected with solo FLT's of student pilots only when training with local Aero-Club; cross wind component MAX 10 KT (lee effect).
 Mountain waves before THR 26 in case of wind from the south-southwest.
 Glide angle 4.5° for approaches to RWY 08.
 The southern traffic circuit may be used for air sports equipment in coordination with AFIS. Otherwise, the