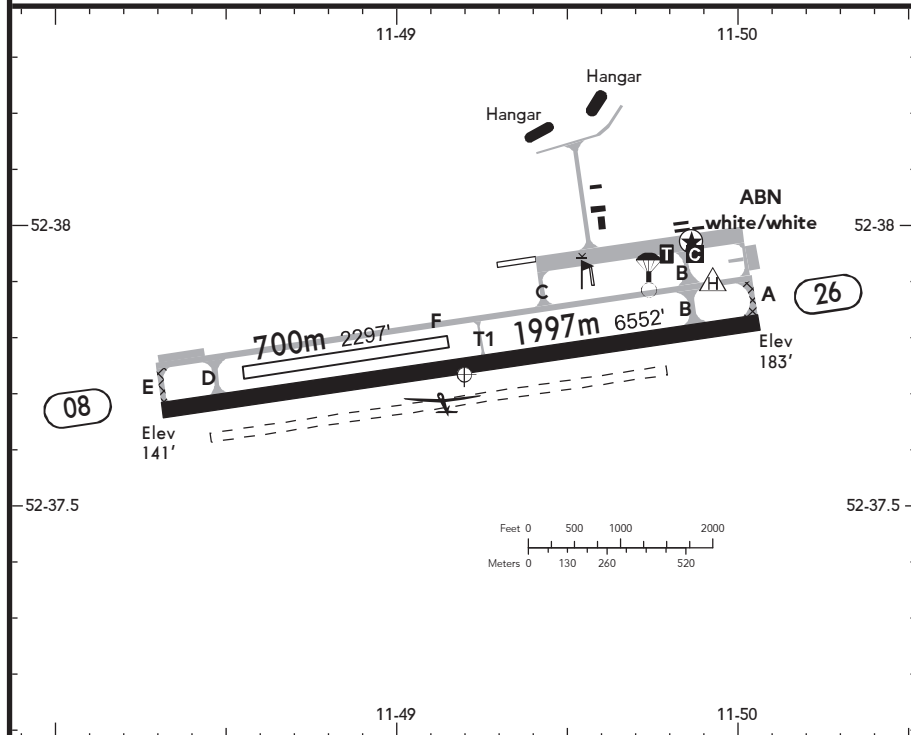


BRIEFING STRIP™

| | | |
|--|--|------------------------------|
| LOCATION Elev 184' /56m N52 37.7 E011 49.2 | AFIS STENDAL INFO 122.405 ⁽¹⁾ (ge) | ADMITTED AIRCRAFT (Cable) |
|--|--|------------------------------|

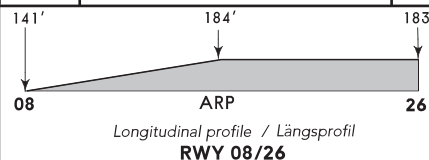
⁽¹⁾ MAX 15 NM / 3000' AGL



SCALE 1:25000

☞ ABN - ALS 26 - PAPI 26 (3.0°) - THRL - RL - TWYL (T1, F, B) - APRON - WDI.

| RWY No | Dimension (m) - Surface | TORA (m) | LDA (m) | Strength | Lights |
|------------------------|-------------------------|----------|---------|---------------------------|--------|
| 08 (080°) 26 (260°) | 1997 x 52 Concrete | 1997 | 1997 | PCN 31/R/B/W/T | ☞ |
| 08 (080°) 26 (260°) | 700 x 40 Grass | 700 | 700 | 2t MPW (2 - 5.7t MPW PPR) | --- |



Glider towing shall be provided south over uninhabited area.
 During operations on the paved RWY, no TKOF of GLD.
 Gutters on both sides of the paved RWY. Attention shall be paid when taxiing onto and turn-off the RWY.
 Avoid residential areas near AD especially Stendal, Borstel, Uenglingen and Schernikau.

Contact STENDAL INFO at least 5 MIN prior to reaching the AD.
 Within AD traffic listening watch shall be maintained.
 Powered ACFT are not permitted to TKOF or land on the paved RWY when the yellow flashing warning light on the glider winch is turned on.
 Simultaneous operations on the paved RWY and on the grass RWYs are not permitted.