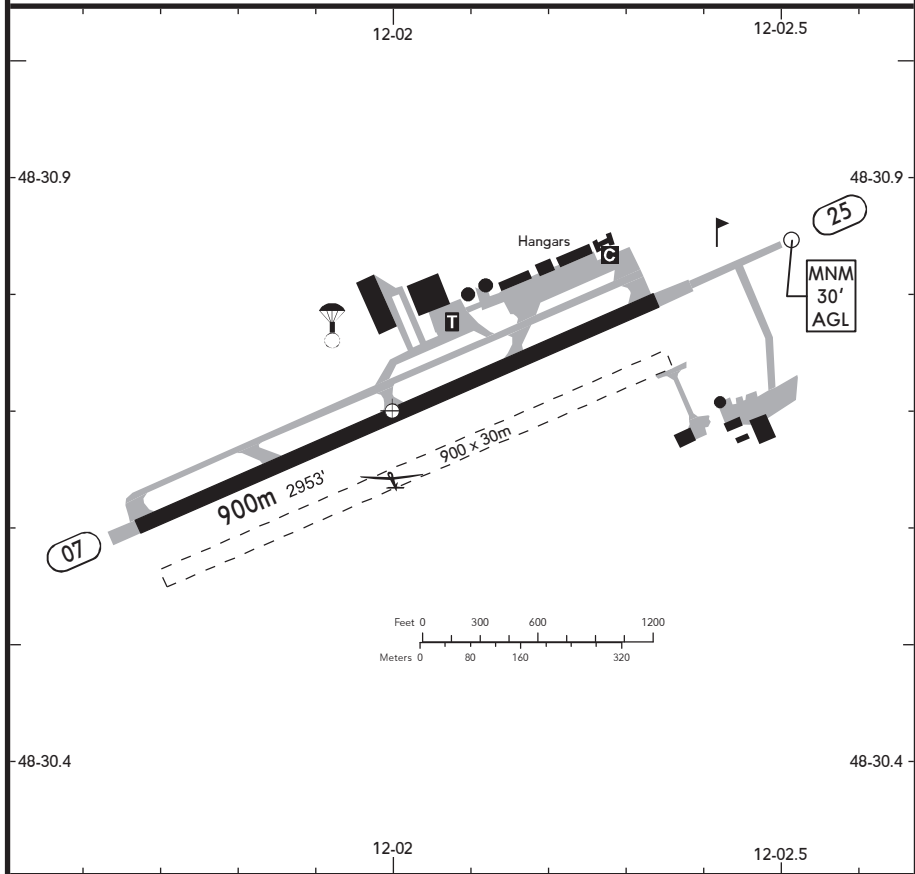


BRIEFING STRIP™

LOCATION Elev 1312' /400m N48 30.7 E012 02.0	AFIS LANDSHUT INFO 129.805 ⁽¹⁾ ⁽²⁾ (ge, en)	ADMITTED AIRCRAFT (Cable)
--	--	---

⁽¹⁾ VDF ⁽²⁾ 15 NM / 3000' AGL



SCALE: 1:12000

RWY No	Dimension (m) - Surface	TORA (m)	LDA (m)	Strength	Lights
07 (065°) 25 (245°)	900 x 23 Paved	900	900	5.7t MPW	---

Contact LANDSHUT INFO at least 5 MIN prior to reaching the AD.

Within AD traffic listening watch shall be maintained.

Downwind, base leg and final shall be reported unrequested.

ULM traffic circuit for training only: S of AD at 1800', PPR, only outside GLD op hrs.

Sat, Sun & Hol intensive GLD flying (winch launching) S of RWY. GLD landings on grass RWY.