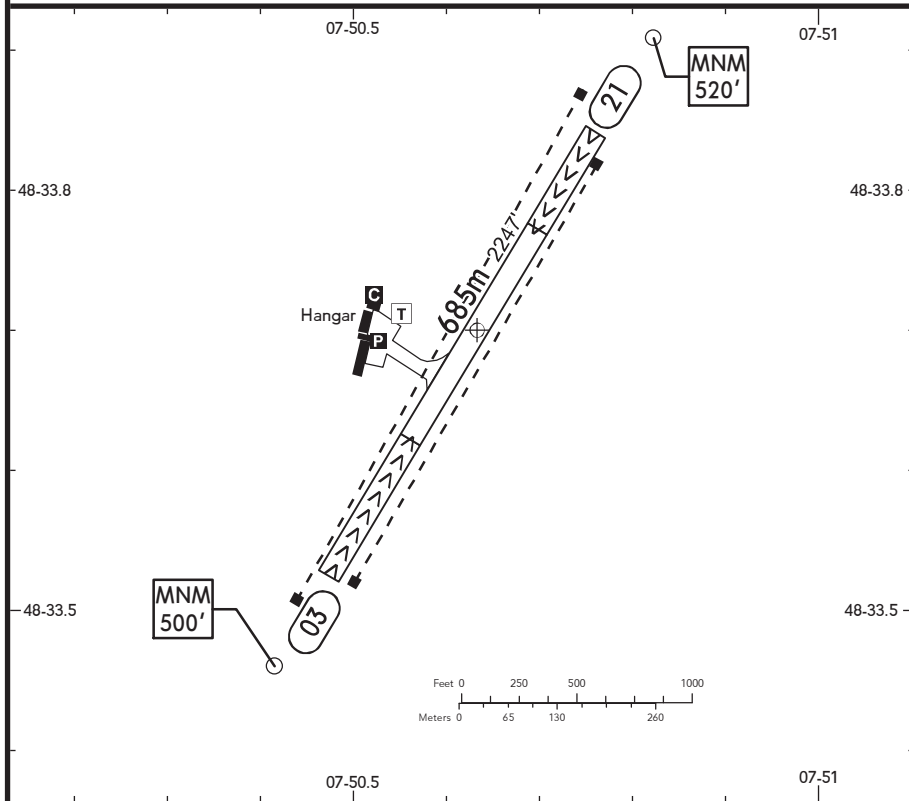


BRIEFING STRIP™

LOCATION Elev 452' /138m N48 33.7 E007 50.6	AFIS KEHL INFO 122.755 ⁽¹⁾ (ge)	ADMITTED AIRCRAFT  (Cable)
--	--	---

⁽¹⁾ MAX 15 NM / 3000' AGL



SCALE:1:10000

RWY No	Dimension (m) - Surface	TORA (m)	LDA (m)	Strength	Lights
03 (030°)	685 x 30 Grass	535	475	1.25t MPW	---
21 (210°)	685 x 30 Grass	475	535	1.25t MPW	---

Contact KEHL INFO at least 5 MIN prior to reaching the AD.

Within AD traffic listening watch shall be maintained.

Avoid residential areas near AD - especially suburbs Kehl-Sundheim, -Neumühl, -Kork, -Odelshofen, except eastern parts of Kehl-Sundheim and -Neumühl since located within APCH/DEP sector.