

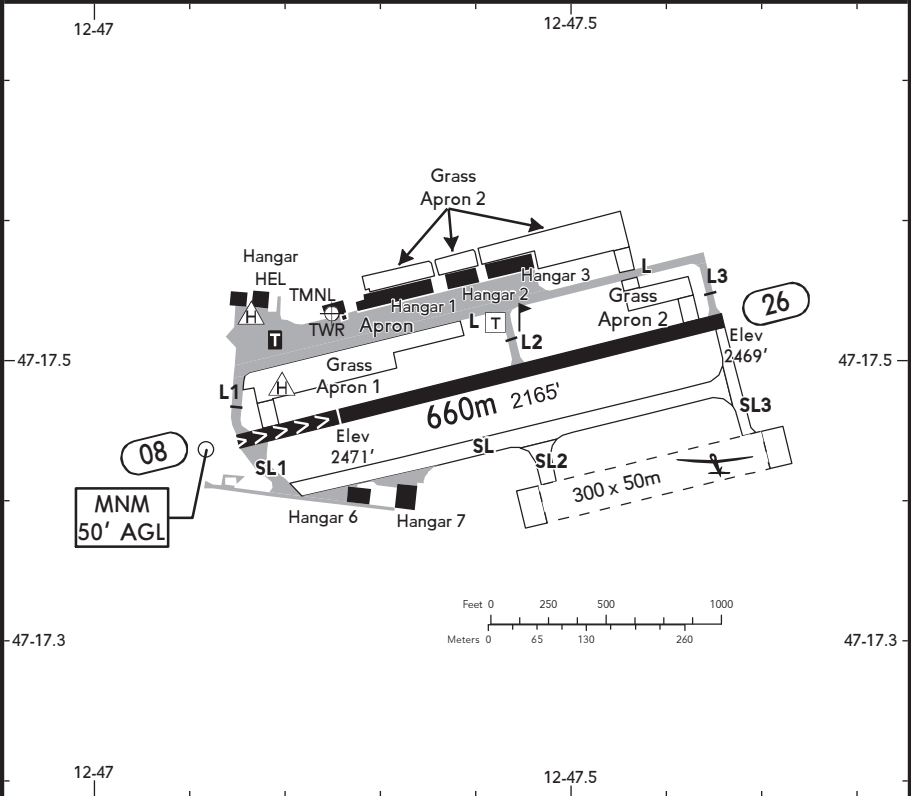
BRIEFING STRIP™

LOCATION  
Elev **2470'** /753m  
N47 17.5 E012 47.3

AFIS  
ZELL AM SEE AERODROME **119.705<sup>(1)</sup>**

ADMITTED AIRCRAFT  


<sup>(1)</sup> EMERG phone in case of COM Failure **+43(0)6542-56041**.



SCALE: 1:10000

---  ---

RWY No	Dimension (m) - Surface	TORA (m)	LDA (m)	Strength	Lights
08		660	540		
26	660 x 18 Asphalt	540	660	5.7t A UW	---

**CAUTION: Pay attention to ropeways and high-tension lines.**

**Look out for gliders, paragliders and parachuting.**

Trees APRX 325m in front of DTHR 08.

NORDO ACFT PPR by TEL.

Contact ZELL AM SEE AERODROME at least 10 NM before reaching AD.

Do not descend below 5000' before having knowledge of RWY in use.

Due to noise abatement reasons adhere strictly to ARR and DEP procedures.

To avoid overflying villages Schüttdorf and Zellermoos during downwind, ACFT shall proceed NW of the road.

Deviations due to TFC or weather must be coordinated

with ZELL AM SEE AERODROME.

Report position and intentions at REPs, on downwind, on base leg and on final.

Overflights MNM 5000' except for TKOF/LDG.

Grass RWY only for GLD on request.

**RWY 08**

**Arrivals**

- from the North: via NOVEMBER to LAKE at MNM 4000', enter downwind (MNM 3500').
- from the West: via WHISKEY MNM 4000' and join TFC circuit S of village Fürth. Final APCH to RWY 08.
- from the East: via ECHO along the arrival route (MNM 4500') to enter downwind (MNM 3500') to RWY 08.