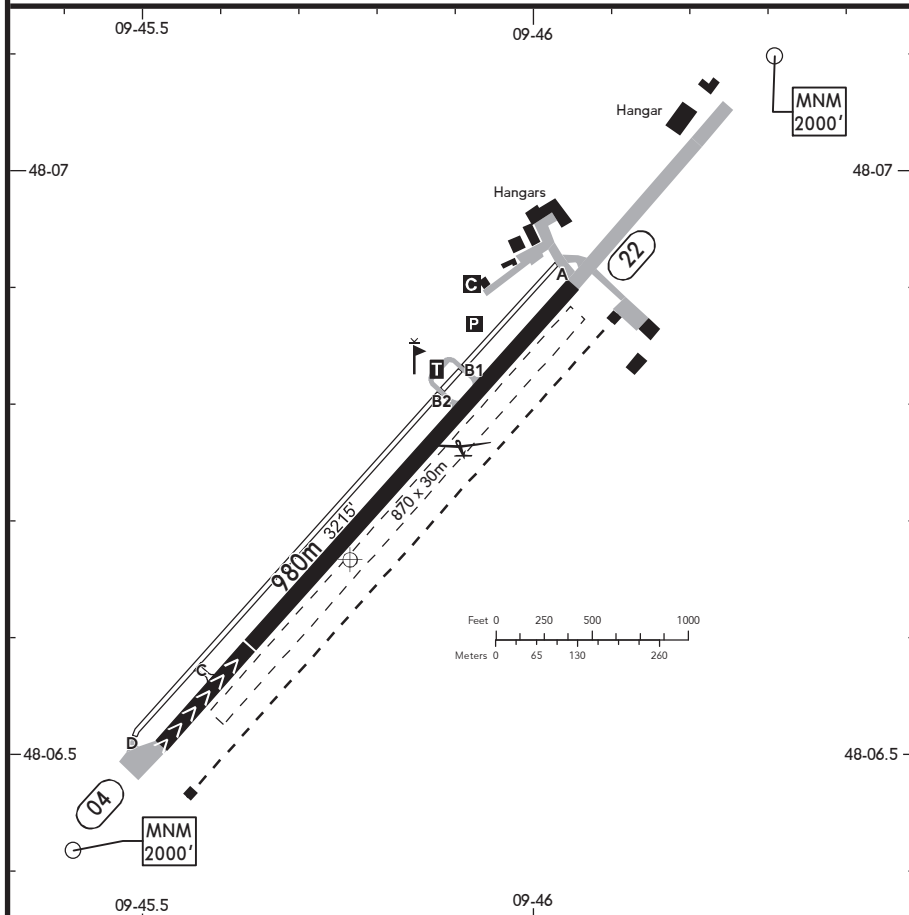


BRIEFING STRIP™

LOCATION Elev <b>1903'</b> /580m N48 06.7 E009 45.8	AFIS BIBERACH INFO <b>120.535</b> <sup>(1)</sup> (ge, en)	ADMITTED AIRCRAFT (Cable)
---	--	------------------------------

<sup>(1)</sup> 15 NM / 3000' AGL



SCALE: 1:12000

⊕ ALS 22 - PAPI 04 (3.3), 22 (3.3) - THRL - RL - WDI - OBSTL.

RWY No	Dimension (m) - Surface	TORA (m)	LDA (m)	Strength	Lights
04 (037°)	980 x 23 Asphalt	980	780	5.7t MPW & Embraer EMB-505 Jets PPR	⊕
22 (217°) ⊕		780	980		

⊕ Paved strip (296m) in front of THR 22 may only be used for TKOF by ACFT with more than 2t MPW and by multi-engined ACFT after prior permission from AD OPR.

Contact BIBERACH INFO at least 5 MIN prior to reaching the AD.  
 Within AD traffic listening watch shall be maintained.  
 Motor ACFT are not permitted to TKOF or land if the yellow flashing warning light on the winch is turned on.  
 Avoid residential areas near AD - especially Biberach, Birkenhard, Mittelbiberach and Warthausen.