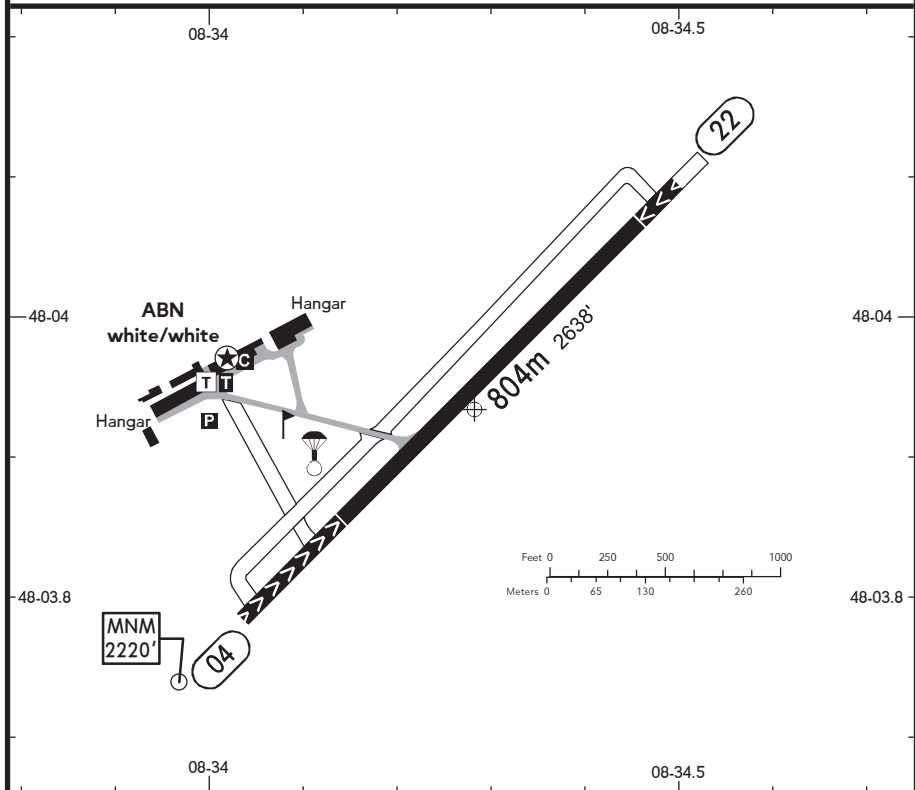


BRIEFING STRIP™

LOCATION Elev <b>2169'</b> /661m N48 03.9 E008 34.3	AFIS SCHWENNINGEN INFO <b>127.535<sup>(1)</sup></b> (ge)	ADMITTED AIRCRAFT 
---	---	-----------------------

<sup>(1)</sup> 15 NM / 3000' AGL



RWY No	Dimension (m) - Surface	TORA (m)	LDA (m)	Strength	Lights
04 (043°)	804 x 20 Asphalt	742	631	5.7t MPW	---
22 (223°)		631	742		

**CAUTION: IFR DEPs at RWY 36 Donaueschingen EDTD will cross traffic circuits in the west.**

**Mind corresponding traffic information by SCHWENNINGEN INFO.**

Contact SCHWENNINGEN INFO at least 5 MIN prior to reaching the AD.

Within AD traffic listening watch shall be maintained.

Additional listening watch on DONAUESCHINGEN INFO due to the RMZ is not required if flights are conducted in the northern RMZ sector.

Avoid overflying residential areas as far as possible, especially Dauchingen, Deißlingen, Mühlhausen and Schweningen town area.