

EDWI



WILHELMSHAVEN

JADEWESER AIRPORT

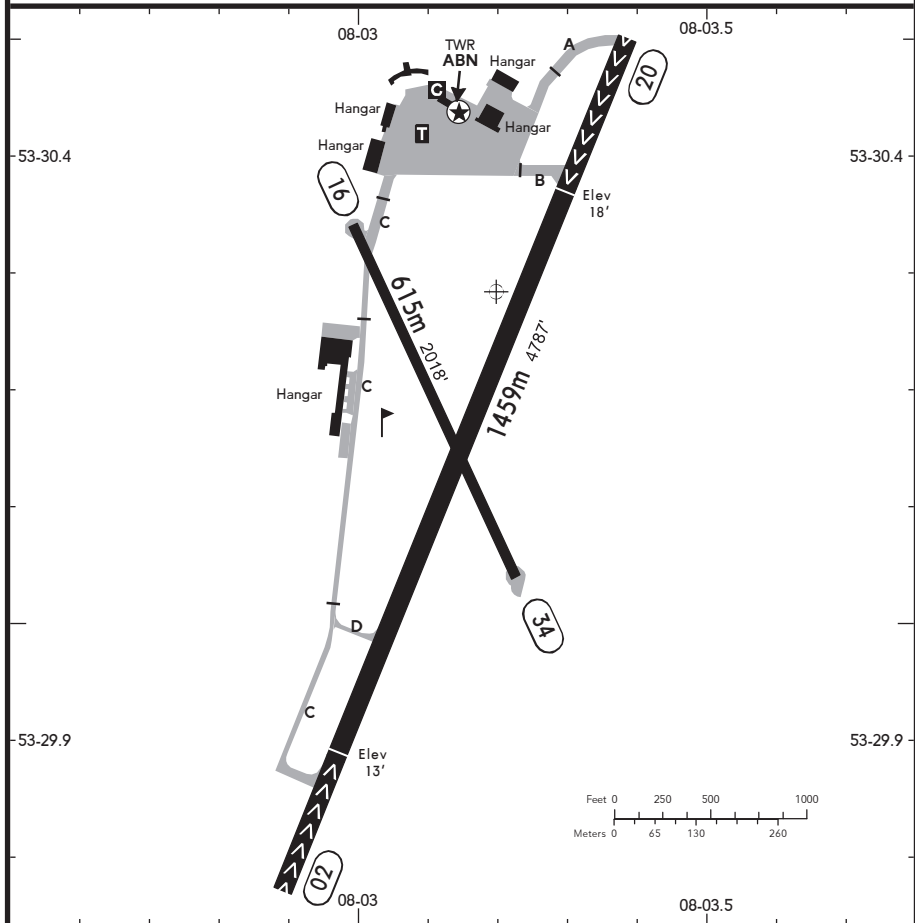
03 APR 20 (19-2)

GERMANY

BRIEFING STRIP™

LOCATION Elev 19' /6m N53 30.3 E008 03.2	AFIS WILHELMSHAVEN INFO 129.255 ⁽¹⁾ (ge, en)	ADMITTED AIRCRAFT
--	--	-----------------------

⁽¹⁾ 25 NM / 4000' AGL



⊙ ABN - ALS 02/20 - PAPI 02 (3.0°), 20 (3.0°) - THR L 02/20 - RL 02/20 - TWYL					
RWY No	Dimension (m) - Surface	TORA (m)	LDA (m)	Strength	Lights
02 (020°) 20 (200°)	1459 x 30 Asphalt	1267 1293	1233 1207	14t MPW (HEL 20t MPW)	⊙
16 (158°) 34 (338°)	615 x 15 Asphalt	592 615	615 592	3t MPW (HEL 20t MPW)	---

Contact WILHELMSHAVEN INFO at least 5 MIN prior to reaching the AD.

Within AD traffic listening watch shall be maintained.

When RWY 16/34 is in use, changes of direction shall be carried out as follows: for DEPs into direction 16 to the left, for DEPs into direction 34 to the right.

VFR APCH/DEP should avoid the IFR APP/DEP sectors.

The western strip of RWY 20 narrows towards RWY end to 45m from RWY edge.

Use of safety vest on maneuvering area is mandatory.

Avoid overflying Cäciliengröden.