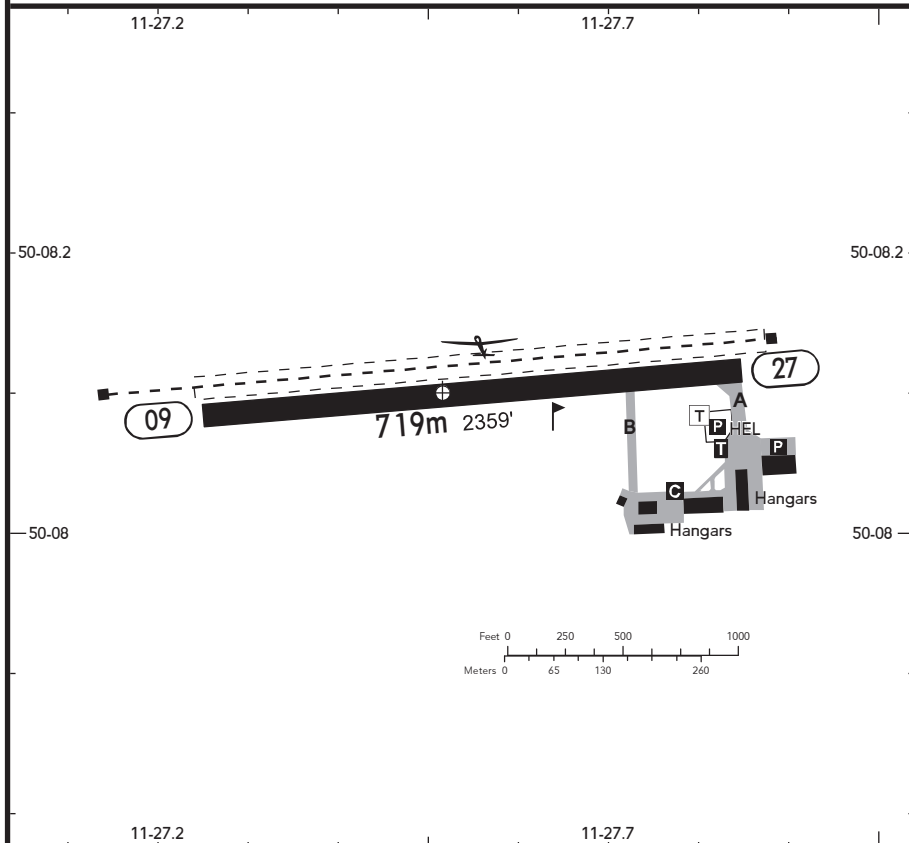


BRIEFING STRIP™

LOCATION Elev 1660' /506m N50 08.1 E011 27.5	AFIS KULMBACH INFO 118.530 ⁽¹⁾ (ge)	ADMITTED AIRCRAFT (Cable)
---	--	----------------------------------

⁽¹⁾ 15 NM / 3000' AGL



RWY No	Dimension (m) - Surface	TORA (m)	LDA (m)	Strength	Lights
09 (085°) 27 (265°)	719 x 30 Asphalt	719	719	5.7t MPW	---

Contact KULMBACH INFO at least 5 MIN prior to reaching the AD.

Within AD traffic listening watch shall be maintained.

Powered ACFT are not permitted to take off or land when the yellow flashing warning light on the glider winch is turned on.

Pay attention to down-drafts on APCHs 27.

Overflights of Kulmbach shall be avoided, if possible.