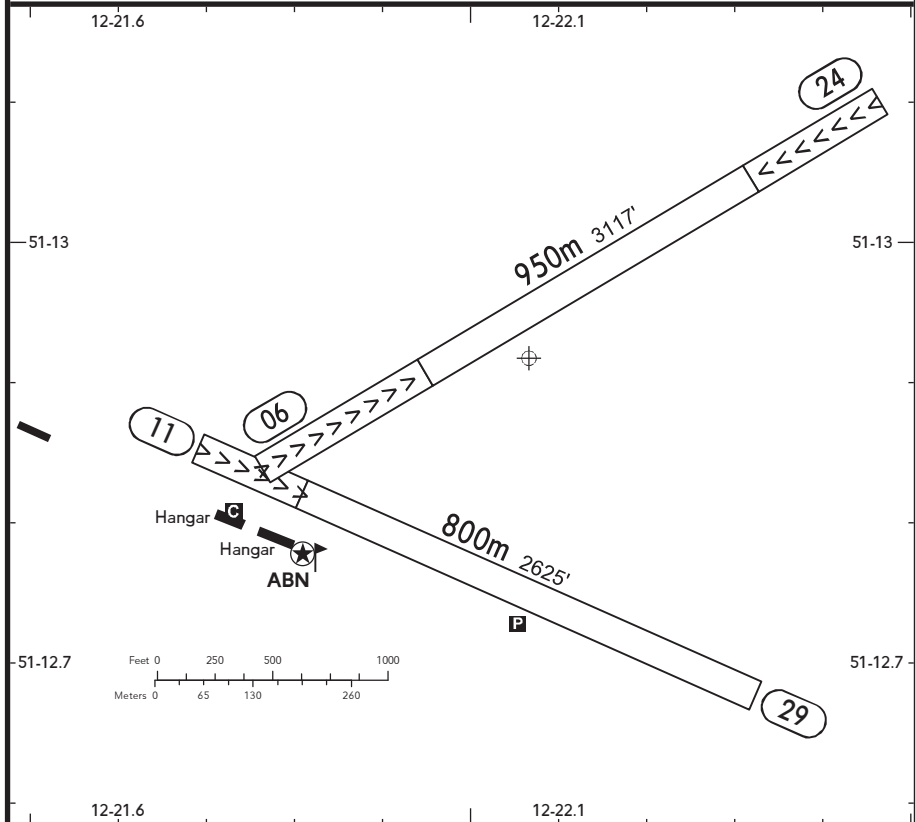


BRIEFING STRIP™

LOCATION Elev <b>430'</b> /131m N51 12.9 E012 22.1	AFIS BOEHLEN INFO <b>118.930</b> <sup>(1)</sup> (ge)	ADMITTED AIRCRAFT  (Cable)
--	---	--

<sup>(1)</sup> 15 NM / 3000' AGL



SCALE: 1:10000

ABN.						
RWY No	Dimension (m) - Surface	TORA (m)	LDA (m)	Strength	Lights	
06 (057°) 24 (237°)	950 x 40 Grass	750 700	700 750	5.7t MPW	---	
11 (110°) 29 (290°)	800 x 40 Grass	800 650	650 800	5.7t MPW	---	

Contact BOEHLEN INFO at least 5 MIN prior to reaching the AD.

Within AD traffic listening watch shall be maintained.

Overflights of the installation for the release of burning gases S of the AD (up to 1500') and overflights of residential areas shall be avoided if possible.

Attention shall be paid to model flying NE of the AD.

Powered ACFT are not permitted to TKOF, land and TAX, when the yellow flashing warning light on the glider winch is turned on.