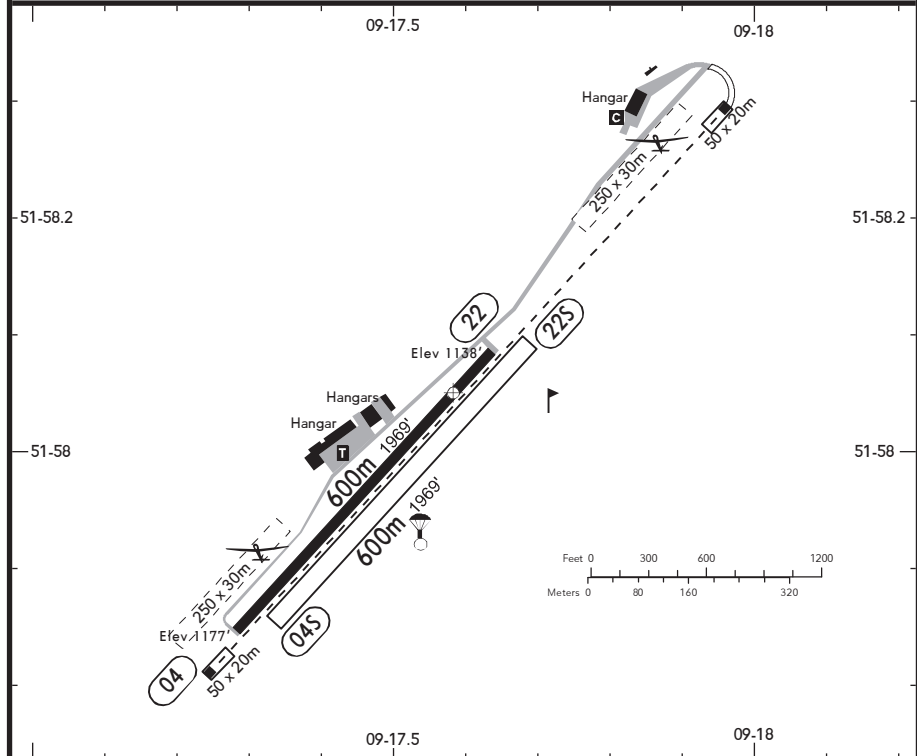


BRIEFING STRIP™

LOCATION Elev 1177' / 359m N51 58.1 E009 17.6	AFIS PYRMONT INFO 121.180 ⁽¹⁾ (ge)	ADMITTED AIRCRAFT (Cable)
--	---	------------------------------

⁽¹⁾ 15 NM / 3000' AGL

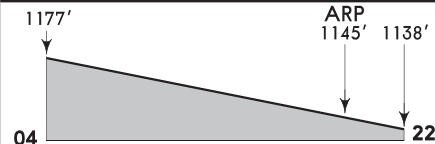


SCALE 1:12000

RWY No	Dimension (m) - Surface	TORA (m)	LDA (m)	Strength	Lights
04 (040°) 22 (220°) ¹	600 x 15 Asphalt	600	600	2t MPW. HEL 6t MPW.	---
04S (040°) 22S (220°) ²	600 x 30 Grass	600	600	2t MPW.	---

¹ TORA & LDA: 1100m PPR.

² With prior consent by PYRMONT INFO.



Longitudinal profile / Längsprofil

RWY 04/22

Contact PYRMONT INFO at least 5 MIN prior to reaching the AD.

Within AD traffic listening watch shall be maintained.

Simultaneous operations on the RWYs for aeroplanes and the glider manoeuvring areas are not permitted.

Overflying of the city and the resort areas of Bad Pyrmont shall be avoided below 2700' as far as possible.