

EDGA

JEPPESSEN

AILERTCHEN

AILERTCHEN

15 NOV 19 **19-2**

GERMANY

BRIEFING STRIP™

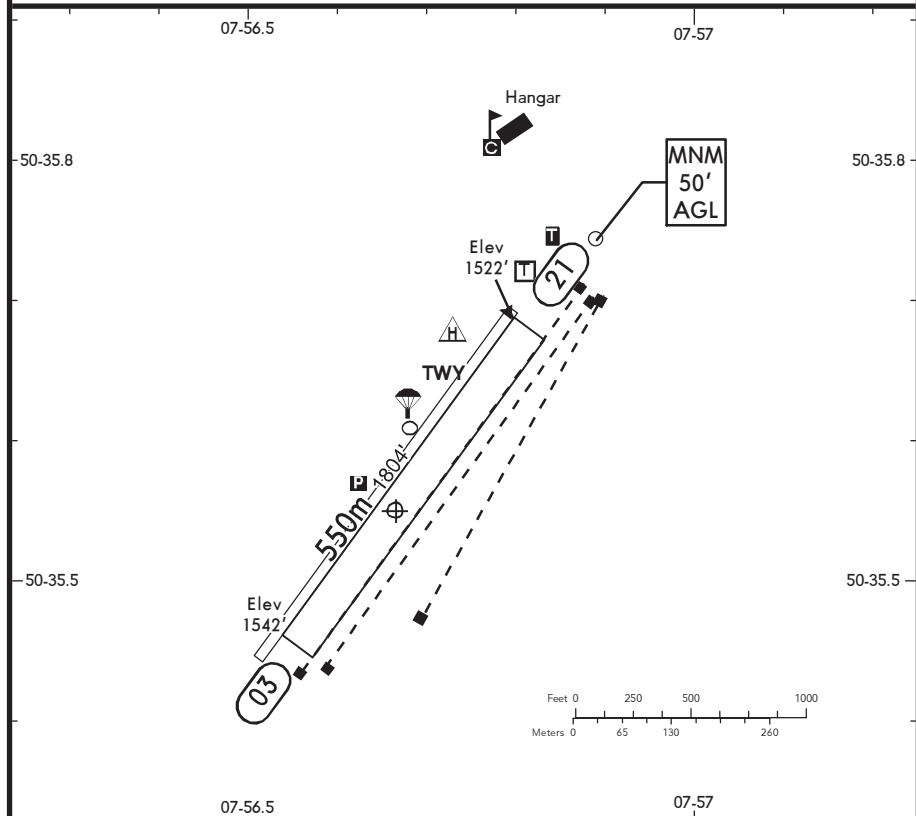
## LOCATION

Elev **1542'** /470m  
N50 35.6 E007 56.7

## AFIS

AILERTCHEN INFO **126.410** <sup>(1)</sup> (ge)

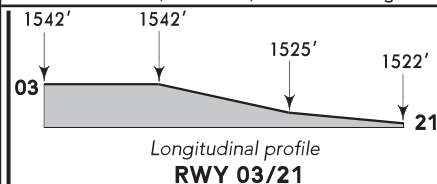
## ADMITTED AIRCRAFT

<sup>(1)</sup> 15 NM / 3000' AGL

SCALE 1:10000

RWY No	Dimension (m) - Surface	TORA (m)	LDA (m)	Strength	Lights
03 (034°) 21 (214°)	550 x 50 Grass	550	550	see Remarks ①	---

① 2t MPW + Do 28 (2t - 3t: PPR). For HEL no weight limitation.



Look out for gliders (especially Sat/Sun/Hol intense operations) and parachute jumping.  
Overflights of villages shall be avoided as far as possible.

Contact AILERTCHEN INFO at least 5 MIN prior to reaching the AD.

Within AD traffic listening watch shall be maintained.

TAX across road L294 only with taxi aid or upon light signal by Flugleitung.