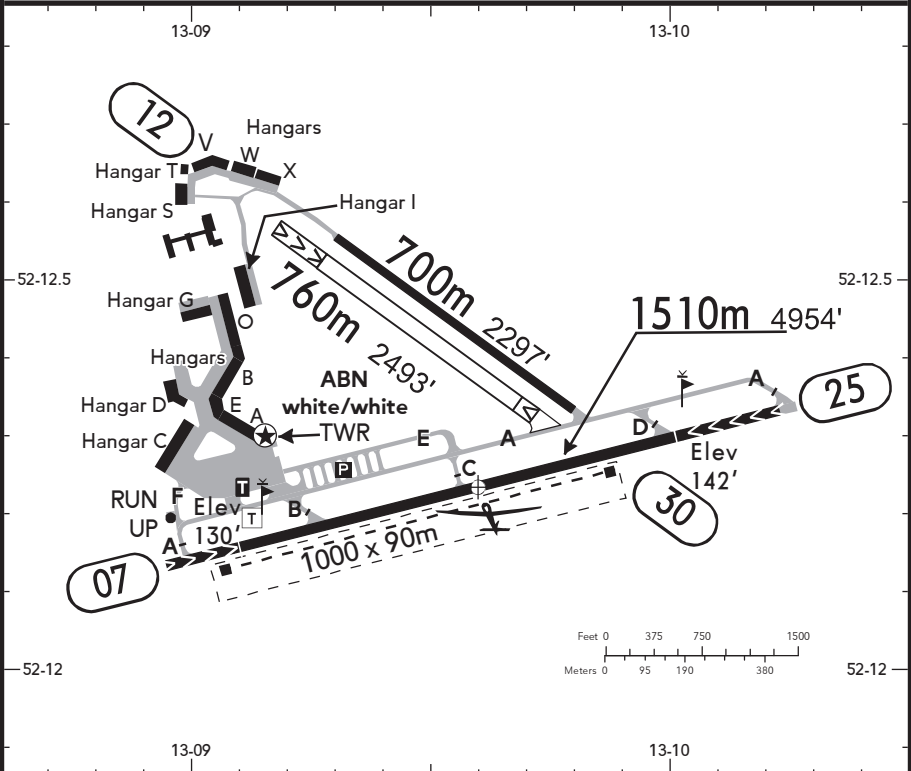


BRIEFING STRIP™

LOCATION Elev <b>152'</b> /46m N52 12.2 E013 09.6	AFIS SCHOENHAGEN INFORMATION <b>131.155</b> <sup>(1)</sup> (ge, en)
---------------------------------------------------------	------------------------------------------------------------------------

ADMITTED AIRCRAFT 
--------------------------------------------------------------------------------------------------------

<sup>(1)</sup> 25 NM / 4000' AGL



☯ ABN - RWY 07/25: ALS - PAPI 07 (3.5°), 25 (3.5°) - THRL - RL - TWYL - APRON - WDI.

RWY No	Dimension (m) - Surface	TORA (m)	LDA (m)	Strength	Lights
07 (072°) 25 (252°) <b>☯</b>	1510 x 23 Asphalt	1270 1340	1340 1270	PCN 25/F/A/X/T	☯
12 (116°) 30 (296°)	760 x 40 Grass	710 625	625 710	2t MPW	---
12 (116°) 30 (296°)	700 x 18 Asphalt	700	700	PCN 25/F/A/X/T	---

**☯** The paved safety strip (40m) may be used additionally for TKOF if necessary.

**NOTE:** Refer to Berlin (EDDB) Area Information.  
 Contact SCHOENHAGEN INFORMATION at least 5 MIN prior to reaching the AD.  
 Within AD traffic listening watch shall be maintained.  
 Straight-in direct APCH & DEP are generally prohibited.  
 Fast ACFT may use the offset base for visual APCH 07.  
 Visual approach traffic circuit 07/25 only via downwind.

Approach via right base 25 only on instruction from INFO.  
 DEPs from RWY 07/25 only with crosswind. No heading change below 1500' as far as possible in VMC.  
 Approaching ULM use pattern for motor ACFT in 1000'.  
 Small ULM-pattern in 700' only for pattern TFC.  
 TKOF into direction RWY 12, LDG in direction RWY 12/30 on instruction from INFO only. TKOF into direction RWY 30 are prohibited for all ACFT.