

**EDRK**  
**WINNINGEN**

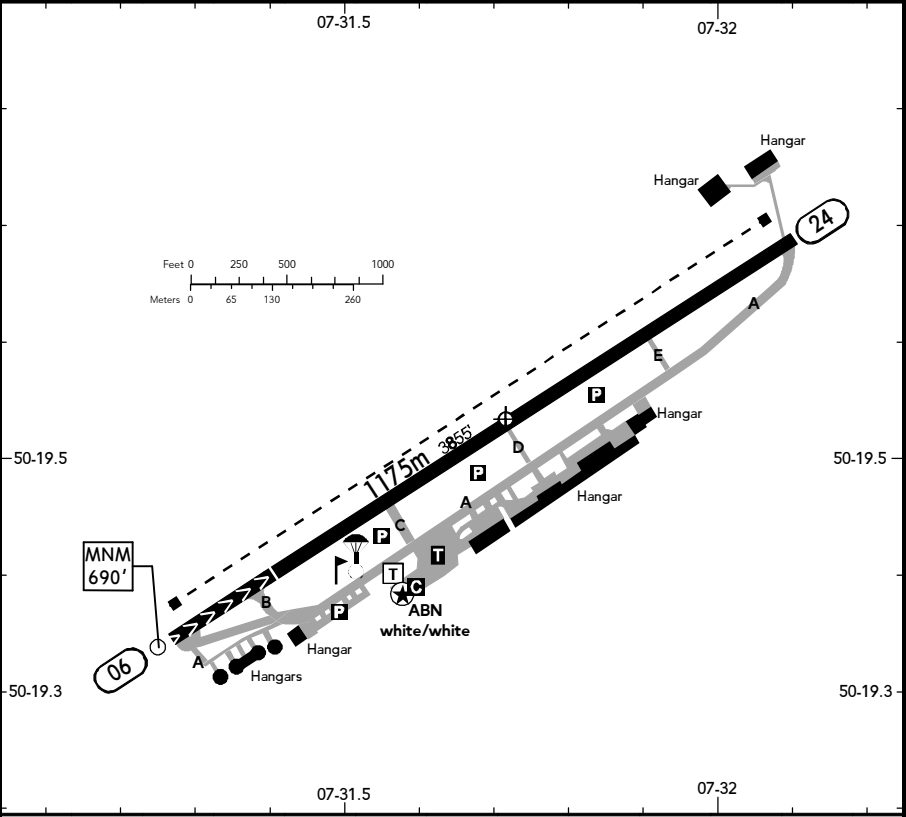
01 JUN 18 **19-2**

**KOBLENZ**  
**GERMANY**

BRIEFING STRIP™

<b>LOCATION</b> Elev <b>640'</b> /195m N50 19.5 E007 31.7	<b>AFIS</b> KOBLENZ INFO <b>122.655</b> <sup>(1)</sup> <sup>(2)</sup> (ge, en)	<b>ADMITTED AIRCRAFT</b>  (Cable)
---	---	---

<sup>(1)</sup> VDF <sup>(2)</sup> 15 NM / 3000' AGL



ABN - THRL - RL.

RWY No	Dimension (m) - Surface	TORA (m)	LDA (m)	Strength	Lights
06 (056°)	1175 x 20 Asphalt	1175	995	5.7t MPW	
24 (236°)		995	1175		

TORA/LDA 1210m for JAR/OPS 1 operations PPR.

Contact KOBLENZ INFO at least 5 MIN prior to reaching the AD. Moselweiß, Karthause and Lay, as well as Winningen and Dieblich.

In the AD traffic listening watch shall be maintained. KOBLENZ INFO will assign traffic circuit.

Simultaneous approaches of ACFT to the asphalt and grass RWY are prohibited.

High-tension line 880' crosses 1700m in front of THR 06.

Powered ACFT are not permitted to TKOF when the amber flashing warning lights at the taxi holding positions to the RWY are turned on.

Attention shall be paid to GLD operations N of AD.

Avoid overflying Koblenz and its districts: Bisholder, Gùls,